

FAMILY UPDATE



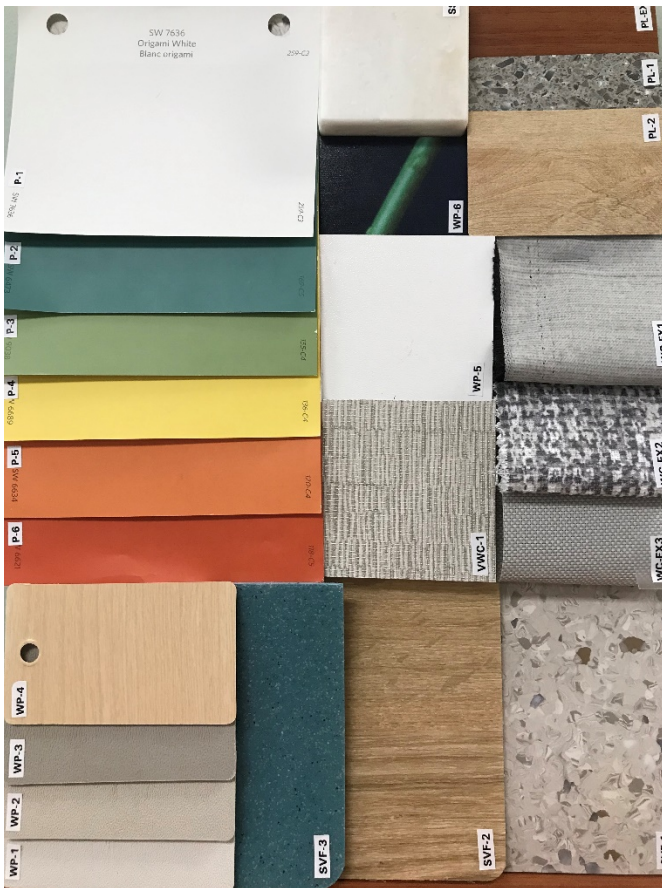
December 1, 2022

Be an MP colour picker!

We want families and residents to help choose colours for MP!

Take a look at these two colour schemes. One will be our guide for refreshing walls, cabinets, floors and wall protection and also influence other choices like furniture.

On the second page you'll find the guide/template explaining what the colours are for.



Scheme 1

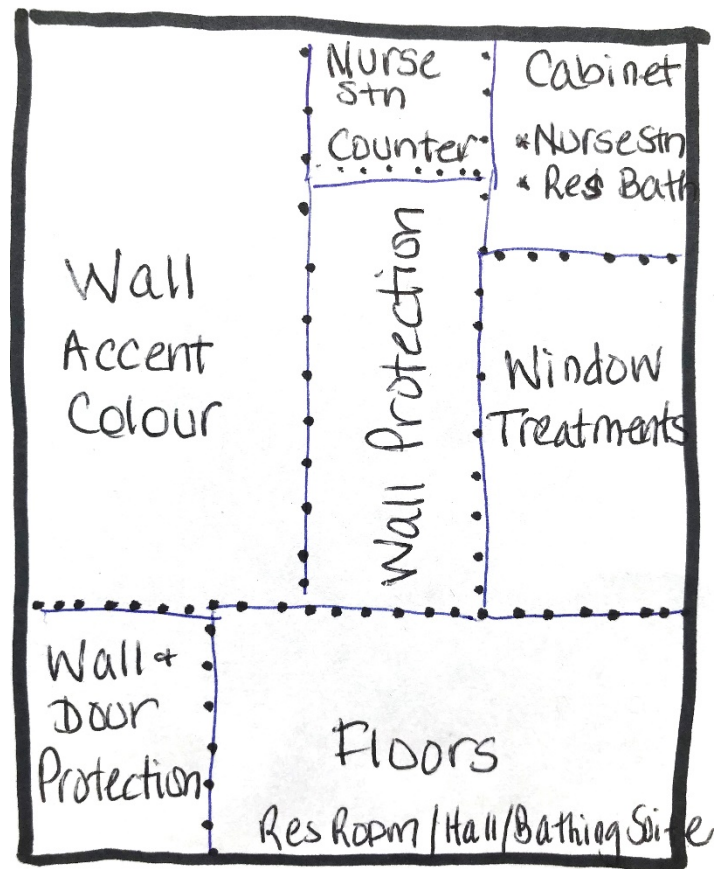


Scheme 2

You can vote either by [emailing me](#) or by marking your choice on a sheet of paper located near the screener's desk at our west entrance (where you can also get a close look at the schemes!)

Everyone is invited to vote, and vote-harvesting for your loved ones is absolutely allowed, though we trust the usual *one person-one vote* election rule will be observed. 😊

Thank you for helping shape the future look of MP!



Yours sincerely,

Jennifer Taylor, Director, Long-Term Care
204-788-8451
jtaylor@misericordia.mb.ca